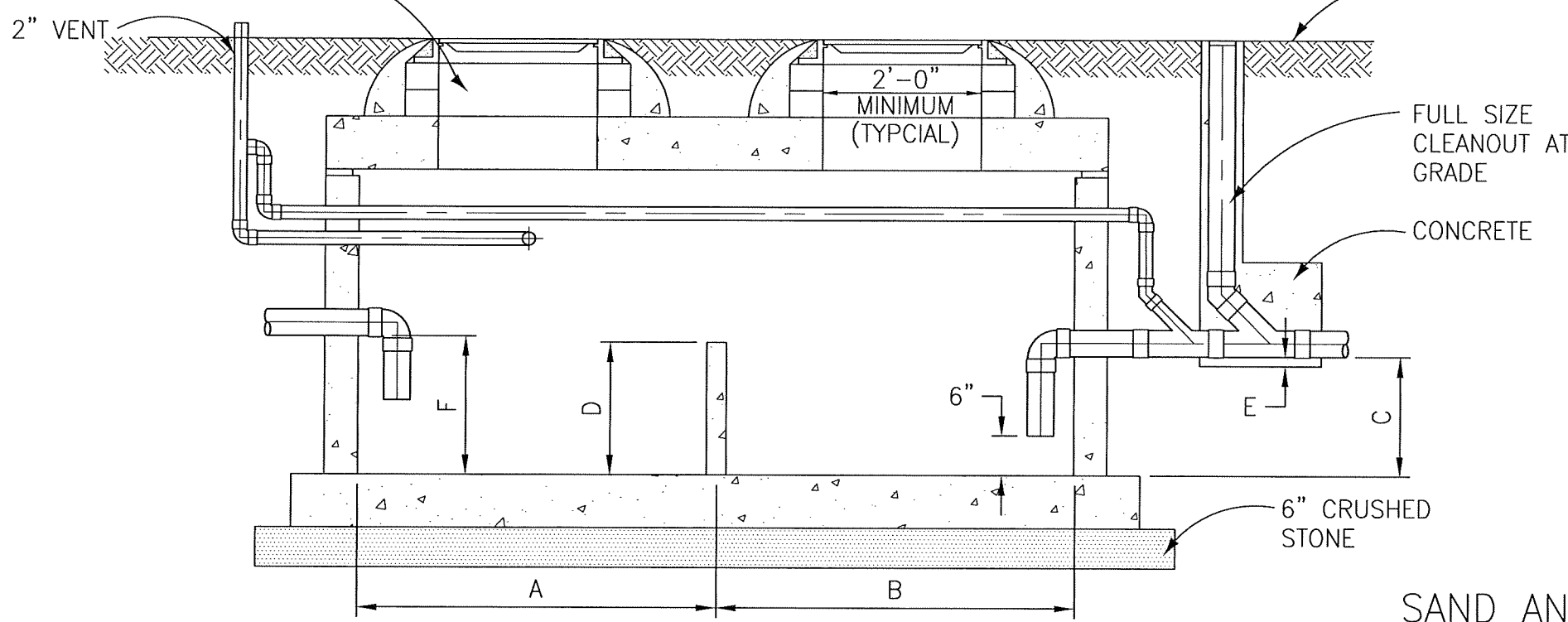


RATED CAPACITY	L	W	A	B	C	D	E
300 GALLONS	72"	48"	24"	24"	21"	14"	7"
750 GALLONS	96"	48"	32"	32"	38"	25"	13"
1,000 GALLONS	108"	72"	36"	36"	30"	20"	10"
1,500 GALLONS	120"	72"	40"	40"	40"	27"	13"

NOTE  
F=C+2"

24" CAST IRON MANHOLE RING & COVER LID MAY HAVE NO PROTRUSIONS ABOVE MANHOLE RIM LEVEL



NOTES:

1. TOP OF VAULT BELOW FINISHED GRADE OR AT GRADE. IF BELOW GRADE, RING AND COVER SHALL BE ADJUSTED TO FINAL GRADE USING A MINIMUM OF 4" GRADE RING(S) AND A MAXIMUM OF 12" GRADE RING(S). FOR DEPTHS OVER 12", A MAN HOLE BARREL SECTION WILL BE REQUIRED. WITH A FLAT TO FOR DEPTHS OF 4" OR LESS AND A ECCENTRIC CONE TOP FOR DEPTHS GREATER THAN 4'.
2. SEE DETAIL 2610 FOR FRAME AND COVER REQUIREMENTS.
3. FIBERGLASS TANKS ARE ACCEPTABLE AS AN ALTERNATIVE TO CONCRETE.
4. BACKFILL IN ACCORDANCE WITH MANUFACTURER'S RECOMMENDATIONS; NO BACKFILL MATERIAL SHALL BE 3" OR GREATER IN DIAMETER.
5. FINAL STRUCTURAL/REINFORCING DESIGN OF PRECAST STRUCTURE TO BE COMPLETED BY MANUFACTURER OR PROFESSIONAL ENGINEER LICENSED IN THE STATE OF COLORADO.

SAND AND OIL INTERCEPTOR  
NOT TO SCALE

2900

UPPER THOMPSON SANITATION DISTRICT  
SAND AND OIL INTERCEPTOR  
STANDARD DETAIL NO. 2900



Upper Thompson Sanitation District  
2196 Mall Road  
Estes Park, Colorado 80517  
Phone: 970.588.4544